

EARTH READY MIX PLASTER (ONE COAT)

EARTH Ready Mix Plaster (One Coat) is a pure gypsum based plaster suitable for most internal wall and partition surfaces including brick, block and concrete. It consists essentially of pure gypsum hemihydrate formulated with special additives to control application and setting characteristics. It contains pure gypsum in natural form, eliminated from all impurities. It gives plaster an unmatched work ability because of its smoothness, coverage and ease of application. When dried it provides a super white, smooth and fine finish.

Features

- Single coat application can be directly applied.
- High coverage up to 92 m²/t.
- Enhanced light reflection, imparting true colour tone and gloss for paint.
- Compatible with any type of paint.
- Mixing Ratio - 1:2 Water & Gypsum Powder by volume.
- Thickness can go up to 32 mm.
- 6 months shelf life.



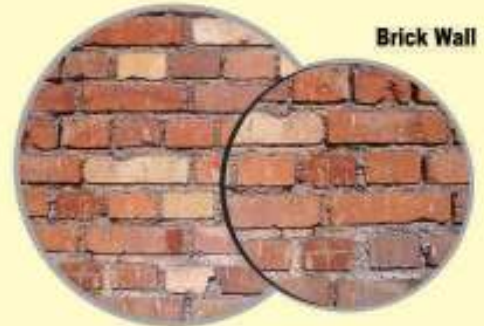
- Crack Free
- No Powdering
- Fungus Free
- Fire Resistant
- Light Weight
- Thermal Resistance
- Affordable

अर्थ
रेडीमिक्स प्लास्टर
ONE COAT

EARTH READY MIX PLASTER (ONE COAT)

Compatibility

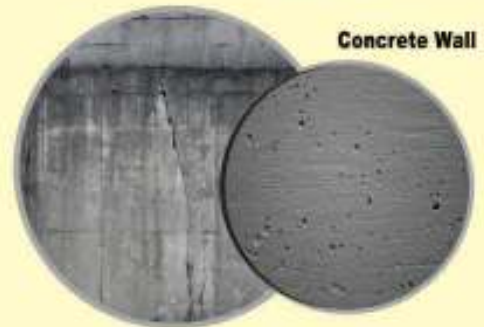
EARTH Ready Mix Plaster (One Coat) can be applied directly on all the Hard Surfaces shown below :



Cement Block Wall



Concrete Wall



Economical



Extra White



Aesthetics



Temperature Control



Crack Free

EARTH READY MIX PLASTER (ONE COAT)

Performances

Description	Sand Cement Plaster	Earth Plaster (P.O.P)	Earth Ready Mix Plaster (one Coat)
Direct Application (Brick/Block/RCC)	✓	X	✓
Line & Level	X	✓	✓
Time Saving	X	✓	✓
Smooth Finish	X	✓	✓
Quality Assurance	X	✓	✓
Water Curing	✓	Does Not Require	Does Not Require
Shrinkage Cracks	✓	Does Not Require	Does Not Require
In-House Manufacturing	X	✓	✓

अर्थ
रेडीमिक्स प्लास्टर
ONE COAT

Technical Specification

Description	Earth Ready Mix Plaster (one Coat)
Initial Setting Time (Min)	16-22
Final Setting Time (Min)	22-28
Density kg/m ³	750
Transverse Strength Kg/cm ²	21.6
Compressive Strength N/mm ²	6
Coverage 13mm (kg/sq'ft)	18.5
Ingredients	Gypsum + Vermiculite + Additive
Thermal Resistance m ² k/w/13mm	0.07
Gypsum Purity (%)	80-85
Fire Resistance	Non-Combustible as per BS 476: Part 4:1970

RECOMMENDED APPLICATION METHODOLOGY



Step 01
Level mark on wall
The wall surface should be thoroughly clean before applying Earth Ready Mix Plaster (One Coat)



Step 02
Filling plaster material
Pre-wet the substrate before applying Earth Ready Mix Plaster (One Coat)



Step 03
Thin slurry coat for finishing
Mix Ready Mix Plaster in water. Water to plaster ratio should be (1:2)



Step 04
Ready Mix Surface for painting
Apply mixed plaster on the substrate & level it with an aluminium bottom scale



Economical



Extra White



Aesthetics



Temperature Control



Crack Free